

***Auto-Sharpening
Cutting Machine***

自動磨刀裁剪機

***Instruction Manual
And parts list***

使用手冊零件目錄

MODEL SES 系列

SU LEE MACHINE IND.CO.,LTD.

使用前應仔細閱讀說明書
BEFORE OPERATING THE MACHINE, READ THIS PAGE CAREFULLY.

使用前應向油杯內加油；將電機後的旋鈕推入轉幾轉，刀片應能上下靈活移動。
Before operating the motor, be sure that electric supply voltage and current are the same as stamped on the nameplate. Fill oil cup. Push in turning knob and turn the machine over a few revolutions by hand to see if the knife moves easily.

清潔及保養

- (1) 每星期兩次用風管或風箱把馬達和磨刀器上的絨頭吹掉。
 - (2) 每星期一次取下前蓋將絲桿上的絨頭弄幹淨。
 - (3) 每天至少一次取下刀片，用槽子清洗器將刀槽清理幹淨。
 - (4) 請勿向底板滾輪加油。
 - (5) 若輪子滾不動，請拆下清洗。
- (1) Use air hose or bellows with proper eye shields and blow lint out of motor and sharpener twice a week.
 - (2) Remove cover over cam and clean out lint around screw mechanism in sharpener once a week.
 - (3) Remove knife and clean slides with slot cleaner at least once a day
 - (4) To prevent undue accumulation of lint, Do not oil plate rollers.
 - (5) If rollers stick, remove from plate and wash in cleaning solvent.

注意 WARNING

當心刀片快口傷人。操作時請使用木手柄推動機器，搬動機器時，請使用提手柄。

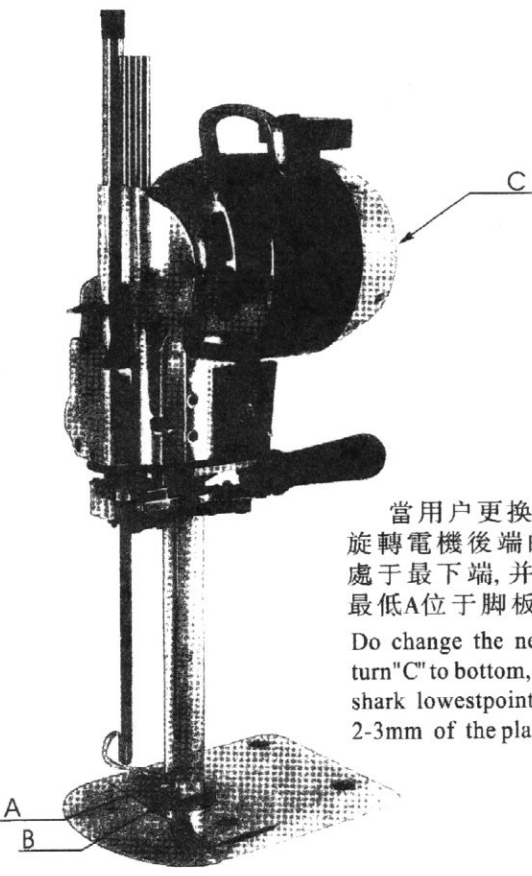
This machine is equipped with a sharp knife, Keep hands away from the knife area at all times. Use control levers and handles only when operating or handling machine

未裝刀片時切勿磨刀，以免造成機器損壞。
Do not operate sharpener without knife in machine or the sharpener will be damaged.

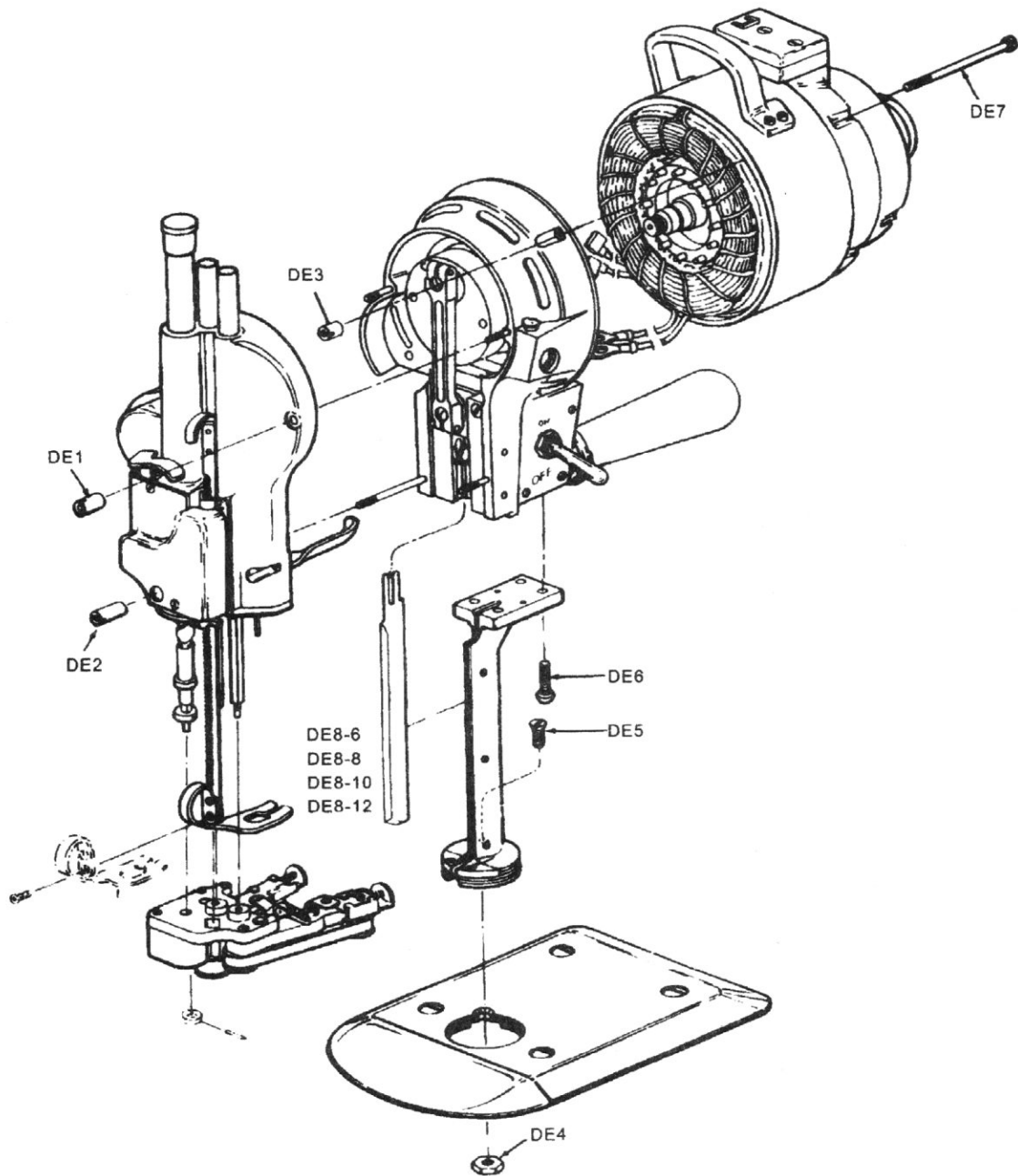
磨刀時 TO SHARPEN THE KNIFE

請放下壓腳，用力慢慢地按下磨刀手柄。如果軋死請抬起撥叉重新再來幾次後，你便會知道怎樣的輕重最適合。

Take the machine out of the lay. Drop pressure foot by means of pressure foot lever located next to machine operating handle. Press release lever downward with a slow, firm pressure to engage sharpening mechanism. Too fast lever action may cause lever to lock. If this occurs, lift latch lever and start Lever. After a few tries you will feel correct operating pressure.



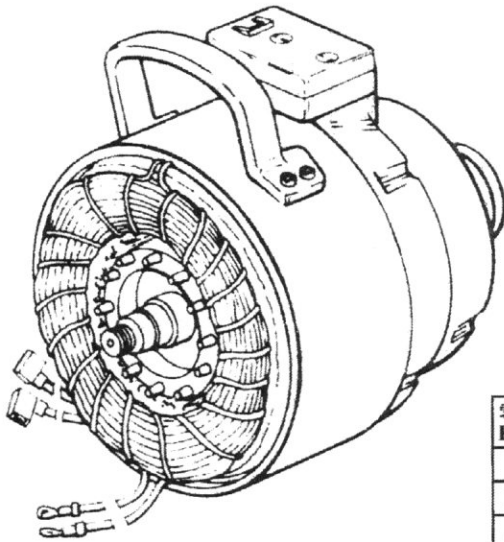
當用戶更換新刀片時，應該旋轉電機後端的旋鈕C使刀片處於最下端，并使刀鋒最低點A位于腳板B下2~3mm。
Do change the new knife, shall turn "C" to bottom, and make knife sharp lowestpoint "A" to below 2-3mm of the plate "B"



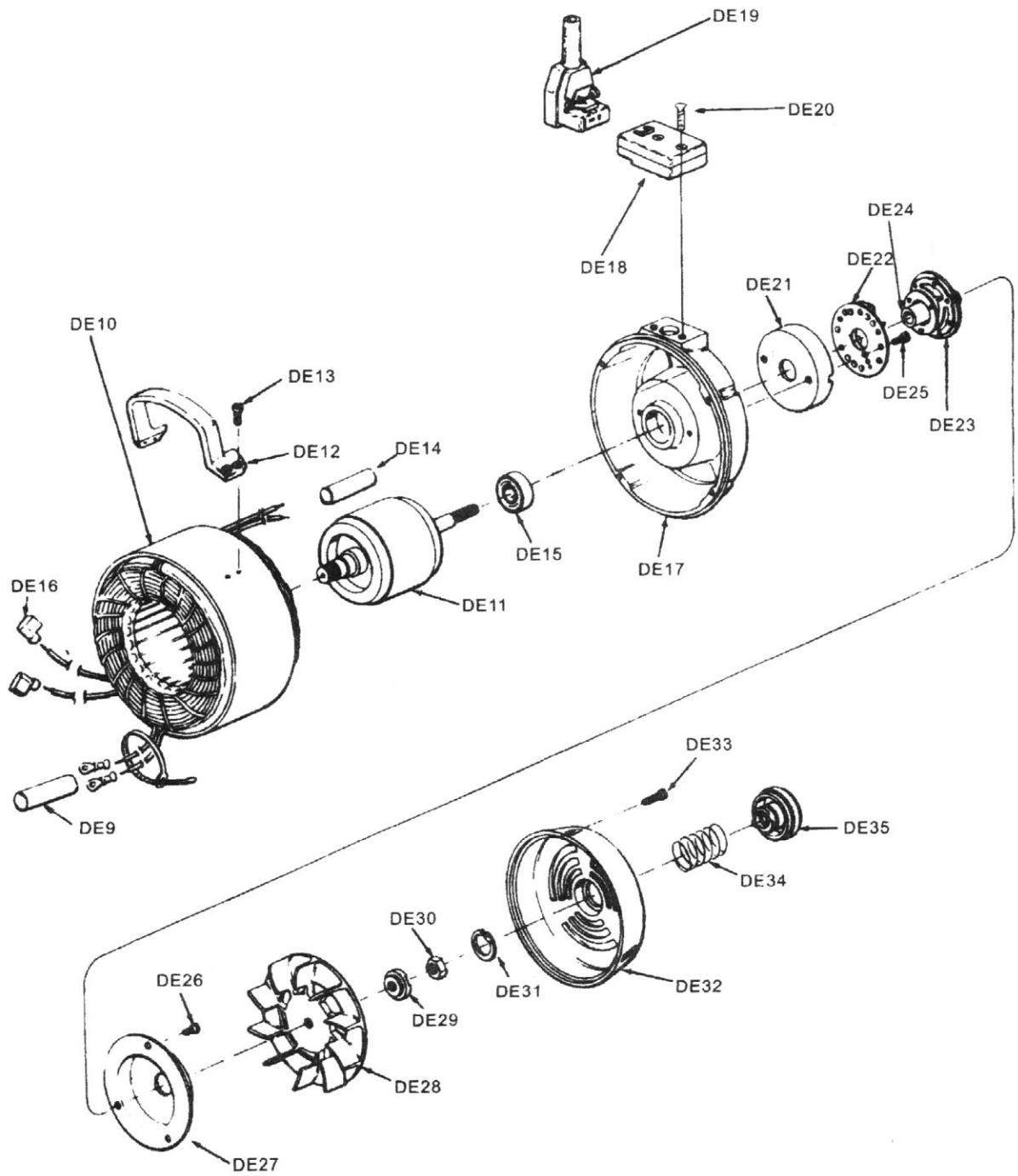
零件號 Part NO.	名稱	Description	數量 No Req'd
DE1	專用短螺母	Sharpener Hold-Down Nut	3
DE2	專用長螺母	Sharpener Hold-Down Nut	1
DE3	專用螺母	Front-to-Rear Bearing Nut	4
DE4	螺母	Plate Bolt Nut	1
DE5	立柱固定螺釘	Stand ard-to-Bearing Screw	1
DE6	立柱螺釘	Front-to-Rear-Bearing Screw	4
DE7	螺釘	Screw	4
DE8	刀片	Knife	1

單向馬達組

Single-phase Motor Assemblies

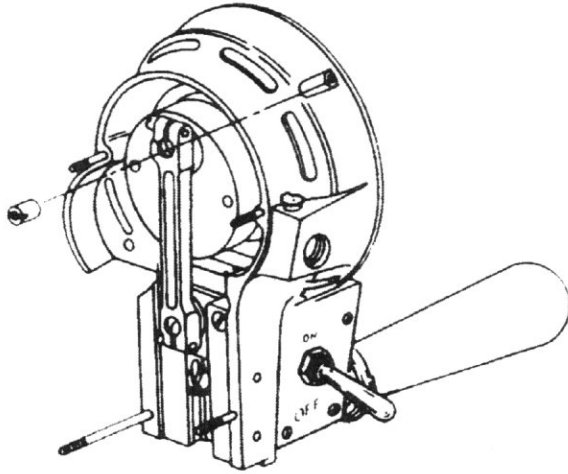


零件號 Part NO.	名稱	Description	數量 No. Req'd
DE9	絕緣器	Terminal Wire Tubing	1
DE10	電機定子組件	Stator with Band	1
DE11	電機轉子組件	Rotor and shaft	1
DE12	提手柄	Carrying Handle	1
DE13	提手柄螺釘	Screw	4
DE14	引綫管	Terminal wire Tubing	1
DE15	單列向心球軸承	Rear Ball Bearing	2
DE16	綫耳	Terminal	2
DE17	后機匣	Rear Bearing House	1
DE18	插頭組件	Terminal Block	1
DE19	電源插頭組件	Attachment Plug	1
DE20	插頭組件螺釘	Screw	2
DE21	離心開關罩	Cutout switch Mount	1
DE22	離心開關切斷器	Automatic Cutout	1
DE23	離心開關組件	Automatic Cutout Switch	1
DE24	離心開關軸套	Shaft Cover For Cutout	1
DE25	離心開關罩螺釘	Screw	2
DE26	離心開關蓋螺釘	Screw	2
DE27	離心開關蓋	Cover for Cutout	1
DE28	風輪	Rotor Fan	1
DE29	止動墊圈	Leading spring Washer	1
DE30	電機轉子圈	Clutch Nut	1
DE31	軸用彈性擋圈	Retaining Ring	1
DE32	風輪蓋	Fan Cover	1
DE33	風輪蓋螺釘	Screw	2
DE34	彈簧	Clutch Spring	1
DE35	旋鈕	Turning Knob	1



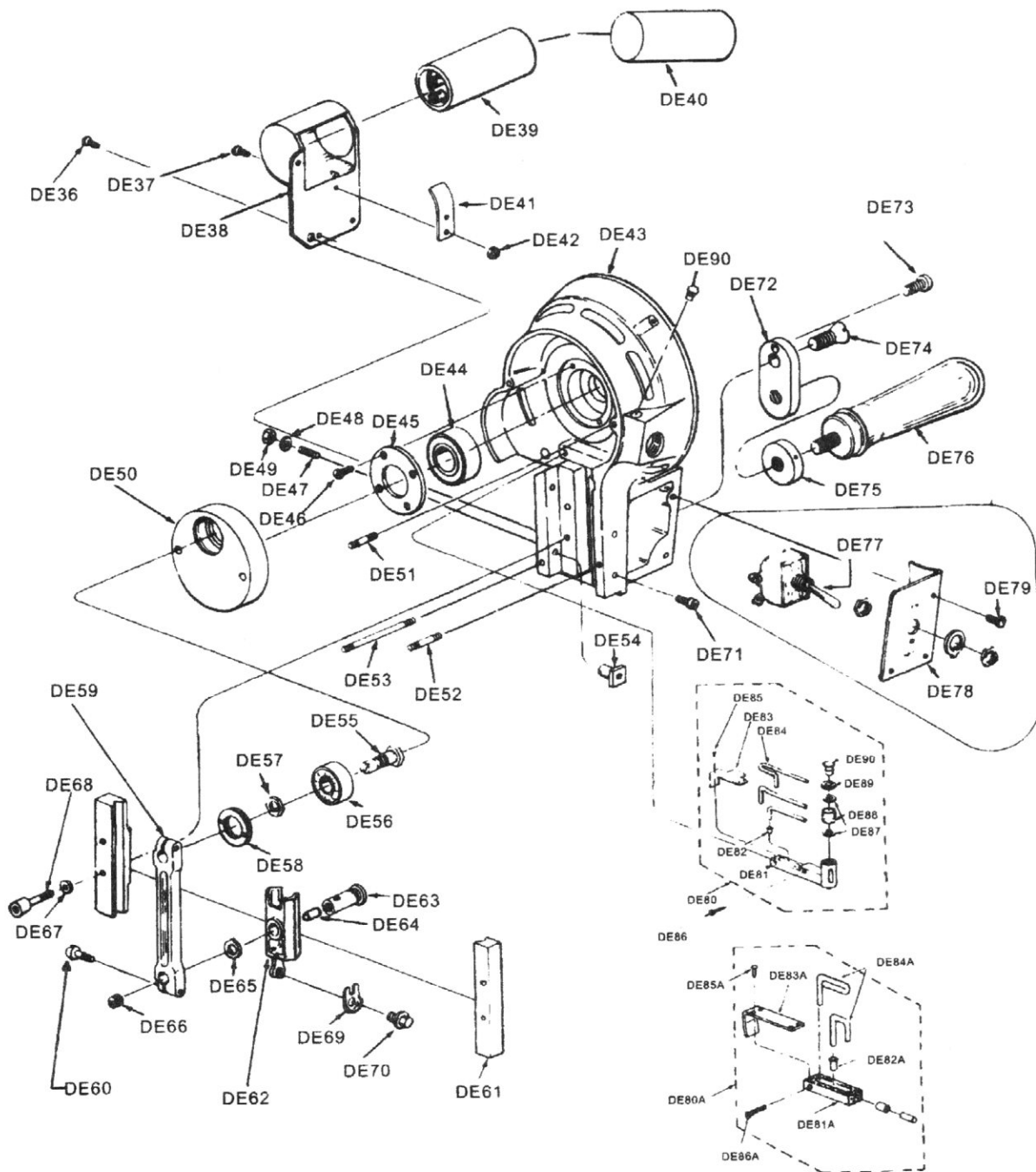
前軸承套組

Front Bearing Housing Assembly



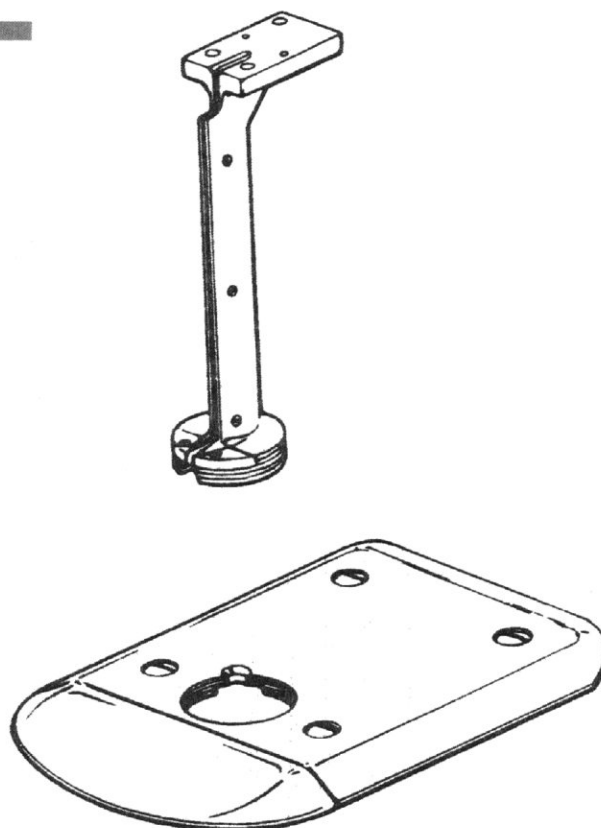
零件號 Part NO.	名稱	Description	數量 No. Req'd
DE36	電容器罩螺釘	Screw	6
DE37	電容壓板螺釘	Screw	1
DE38	電容器罩	Capacitor Cover	1
DE39	啓動電容	Capacitor	1
DE40	電容器外套	Cover for Capacitor	1
DE41	電容壓板	Spring for Capacitor	1
DE42	六角螺母	Shaft Lock Nut	1

零件號 Part NO.	名稱	Description	數量 No. Req'd
DE43	前機匣	Front Bearing Housing	1
DE44	單列向心球軸承	Bearing	1
DE45	前機匣軸承擋圈	Front Ball Bearing Retainer	1
DE46	軸承擋圈螺釘	Screw	4
DE47	內六角平端緊定螺釘	Screw	3
DE48	墊圈	Washer	9
DE49	螺母	Nut	3
DE50	偏心輪	Crank	1
DE51	雙頭螺栓	Stud, upper	2
DE52	雙頭螺栓	Stud, Lower Mounting	1
DE53	雙頭螺栓	Stud, Lower Mounting	1
DE54	支撐螺套	Guide Adjustment Nut	2
DE55	傳動銷	Shaft for Ball Bearing	1
DE56	單列向心球軸承	Seated Crank Ball Bearing	1
DE57	傳動銷螺母	Lock Nut for Shaft	1
DE58	軸承擋圈	Crank Ball Bearing. Lock Nut	1
DE59	連桿	Connecting Rod	1
DE60	連桿螺釘	Screw	2
DE61	導軌	H. Guide	1
DE62	中心滑塊	Cross Head	1
DE63	從動銷	Wrist Pin	1
DE64	油繩	Wrist Pin Felt Pad	1
DE65	墊片	Connecting Rod Washer	1
DE66	半端緊定螺釘	Screw	1
DE67	墊片	Guide Washer	1
DE68	圓柱頭內六角螺釘	Screw	6
DE69	固定刀墊片	Knife Lock Washer	1
DE70	方頭螺釘	Screw	1
DE71	圓柱頭內六角螺釘	Screw	2
DE72	力板	Handle Bracket	1
DE73	內六角螺釘	Screw	1
DE74	力板螺釘	Screw for Handle Bracket	1
DE75	木手柄鎖緊螺母	Operating Handle Lock Nut	1
DE76	木手柄	Operating Handle	1
DE77	電機開關	Switch	1
DE78	開關蓋	Switch Base	1
DE79	開關蓋螺釘	Screw	3
DE80	油杯組件	Oiling device	1
DE81	油杯座	Oil Tube	1
DE82	空心鉚釘	Eyelet	1
DE83	油杯座蓋板	Cover for Oil Tube	1
DE84	油繩	Long Wicking	3
DE85	油杯座蓋板螺釘	Screw	4
DE86	油杯座螺釘	Screw	2
DE87	密封圈	Circle	2
DE88	油窗	Windows for oil	1
DE89	油杯座蓋	Oil tube cover	1
DE90	油杯	Oil Hole Cover	1

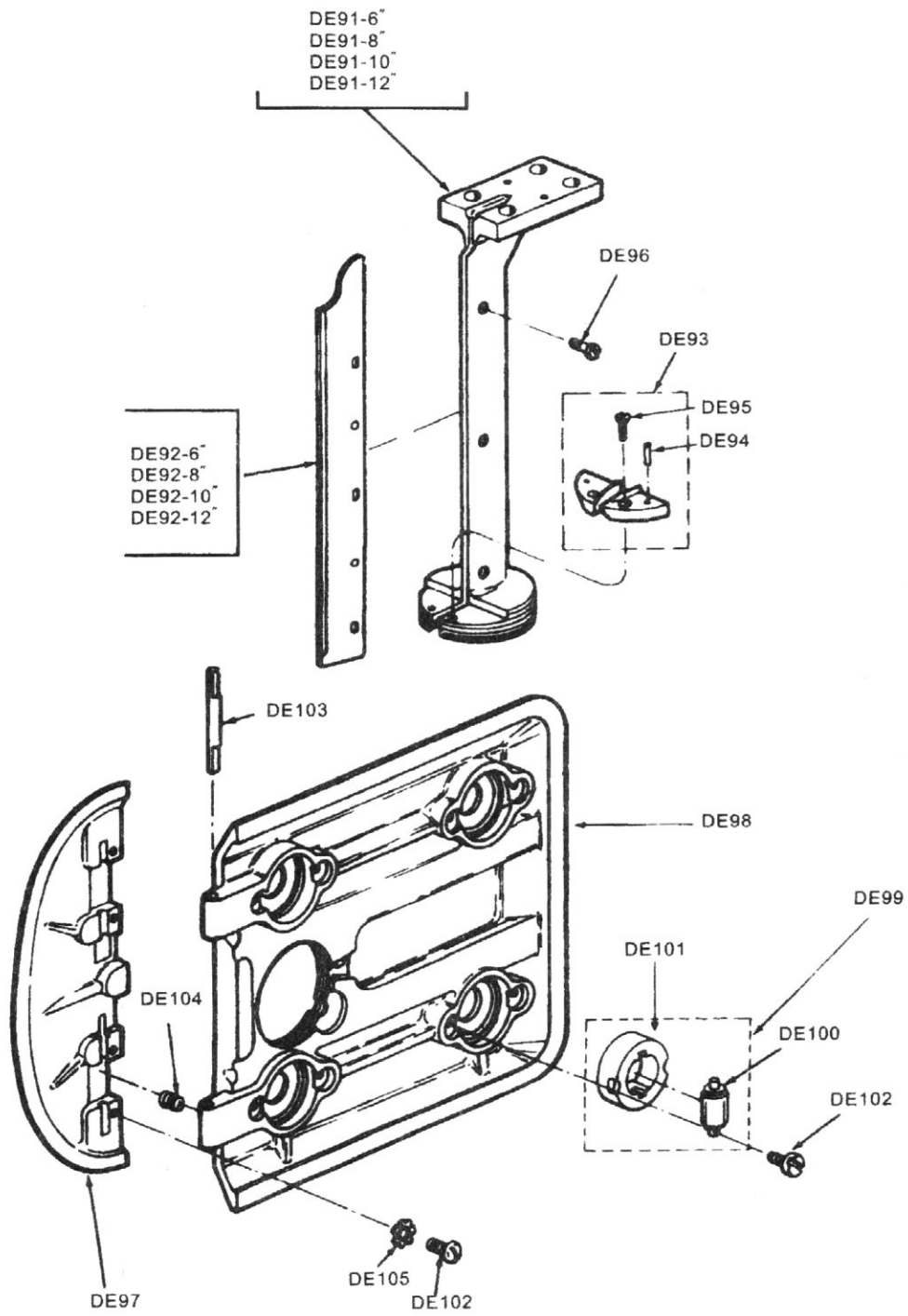


刀夾底盤組

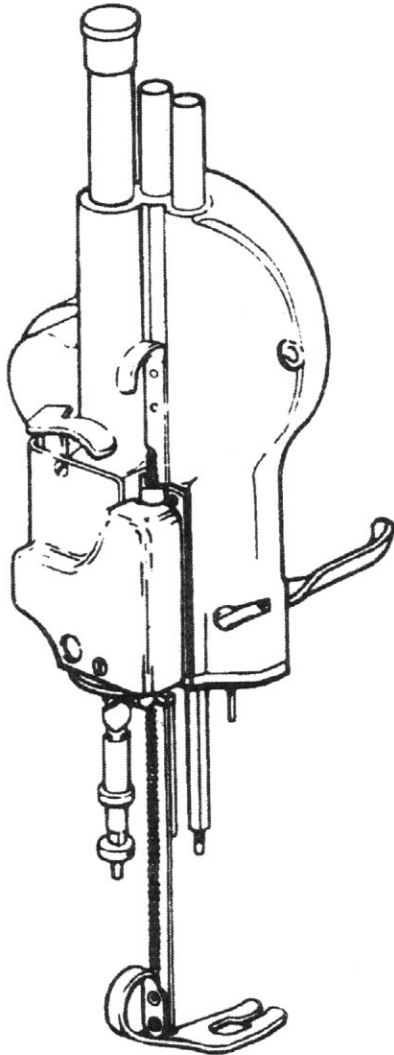
Standard and Baseplate Assembly



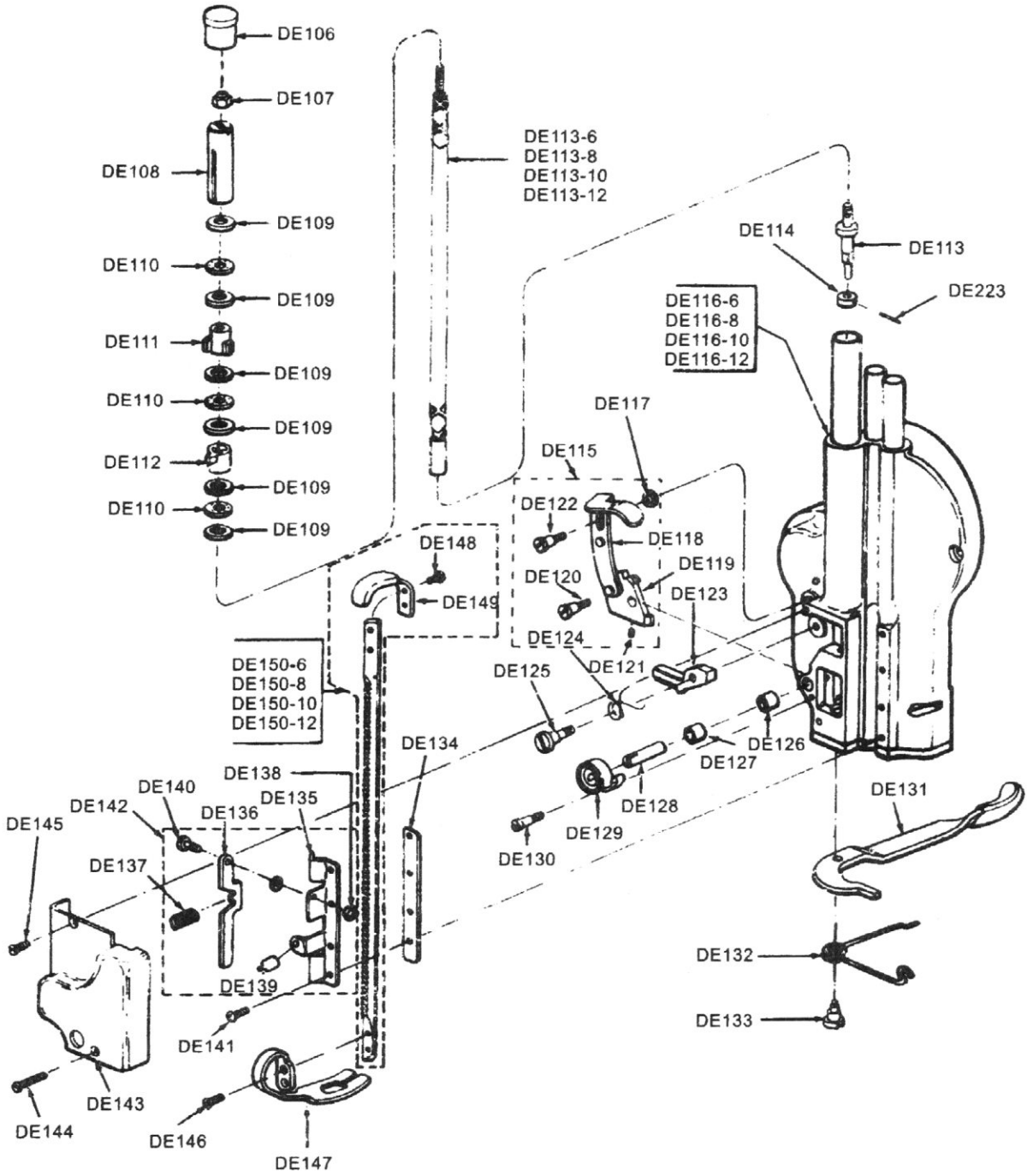
零件號 Part NO.	名稱	Description	數量 No. Req'd
DE91	立柱	Standard	1
DE92	刀殼組件	Knife Slide	1
DE93	腳板	Throat Plates	2
DE94	腳板定位銷	Taper pin	2
DE95	腳板螺釘	Screw	2
DE96	刀殼螺釘	Screw	3
DE97	導板	Plate Wing	1
DE98	底座	Plate	1
DE99	滾輪組件	Rubber Roller all set	4
DE100	滾輪襯套組件	Roller Shell	4
DE101	橡膠安裝座組件	Rubber Mounted Roller	4
DE102	底板壓軸螺釘	Clamp Screw for Roller	12
DE103	導板連接軸	Hinge Pin	2
DE104	導板彈簧	Plate Wing Spring	2
DE105	止動墊片	Lock Washer.#8	2



磨刀器組
正面 **FRONT**
Front Sharpener Housing Assembly



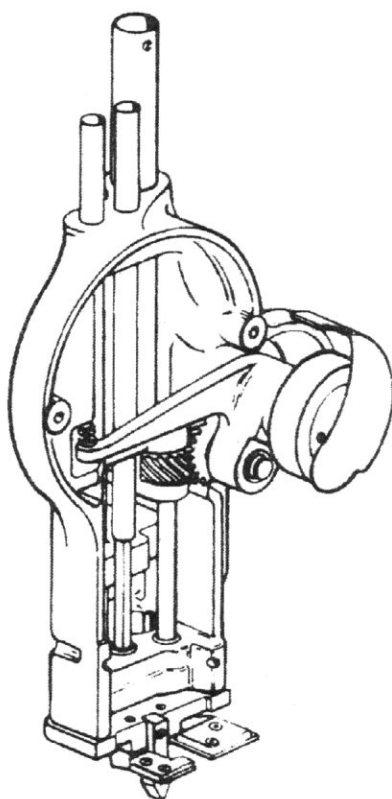
零件號 Part No.	名稱	Description	數量 No. Req'd
DE106	塑料帽	Cap of Tube	1
DE107	鎖緊螺母	Stop Nut for Screw Shaft	1
DE108	絲桿上螺母	Nut for Screw Shaft	1
DE109	軸承片	Thrust washer for Nuts	3
DE110	軸承組件	Thrust Ball Bearing	3
DE111	左向螺母	L.H.Nut for screw Shaft	1
DE112	右向螺母	R.H.Nut for screw Shaft	1
DE113	雙向絲桿	Screw Shaft	1
DE114	雙向絲桿擋圈	Collar for Extensiom	1
DE115	磨刀手柄組件	Release Lever with Cam	1
DE116	磨刀機匣組件	Sharpener Housing ^(With Bushings and Tubes)	1
DE117	彈性墊圈	Spring washer for Release Lever	1
DE118	磨刀手柄	Release Lever With Cam	1
DE119	偏心塊	Cam	1
DE120	磨刀手柄鉚釘	Screw	1
DE121	圓柱端緊定螺釘	Set Screw for Cam	1
DE122	磨刀手柄活動螺釘	Screw for Release Lever	1
DE123	撥叉	Latch for Cam	1
DE124	撥叉彈簧	Spring for Latch	1
DE125	撥叉定位螺釘	Screw for Latch	1
DE126	發條銷下軸襯	Bearing for Cam Shaft	1
DE127	發條銷上軸襯	Bearing for Cam Shaft	1
DE128	發條銷	Shaft for Cam	1
DE129	鎖緊發條	Cam Spring	1
DE130	發條銷限位螺釘	Cam Shaft Spring Screw	1
DE131	壓腳放手柄	Pressure Foot Lever	1
DE132	放手柄彈簧	Spring for Pressure Foot Lever	1
DE133	放手柄螺釘	Pressure Foot Lever Screw	1
DE134	護齒托架墊片	Spacer for Knife Guard Lock Bracket	1
DE135	壓腳托架	Knife Guard Lock Bracket Complete	1
DE136	壓腳定位板	Lock for Pressure Foot	1
DE137	護齒彈簧	Spring for Knife Guard Lock	1
DE138	鎖緊螺母	Nut for pressure Foot Lock	1
DE139	支持樁子	Knife Guard Lock Bracket Only	1
DE140	護齒螺釘	Screw for Knife Guard Lock	1
DE141	壓腳托架螺釘	Screw	4
DE142	壓腳托架組件	Pressure Foot Lock Bracket Complete	1
DE143	前罩	Cover Over Cam	1
DE144	前罩下螺釘	Screw	1
DE145	前罩上螺釘	Screw	1
DE146	壓腳螺釘	Screw for Pressure Foot Shoe	2
DE147	壓腳	Pressure Foot shoe	1
DE148	壓腳桿提手柄螺釘	Screw	2
DE149	壓腳桿提手柄	Lift Handle for Knife Guard Rad	1
DE150	壓腳桿	Knife Guard Rod	1



磨刀器組

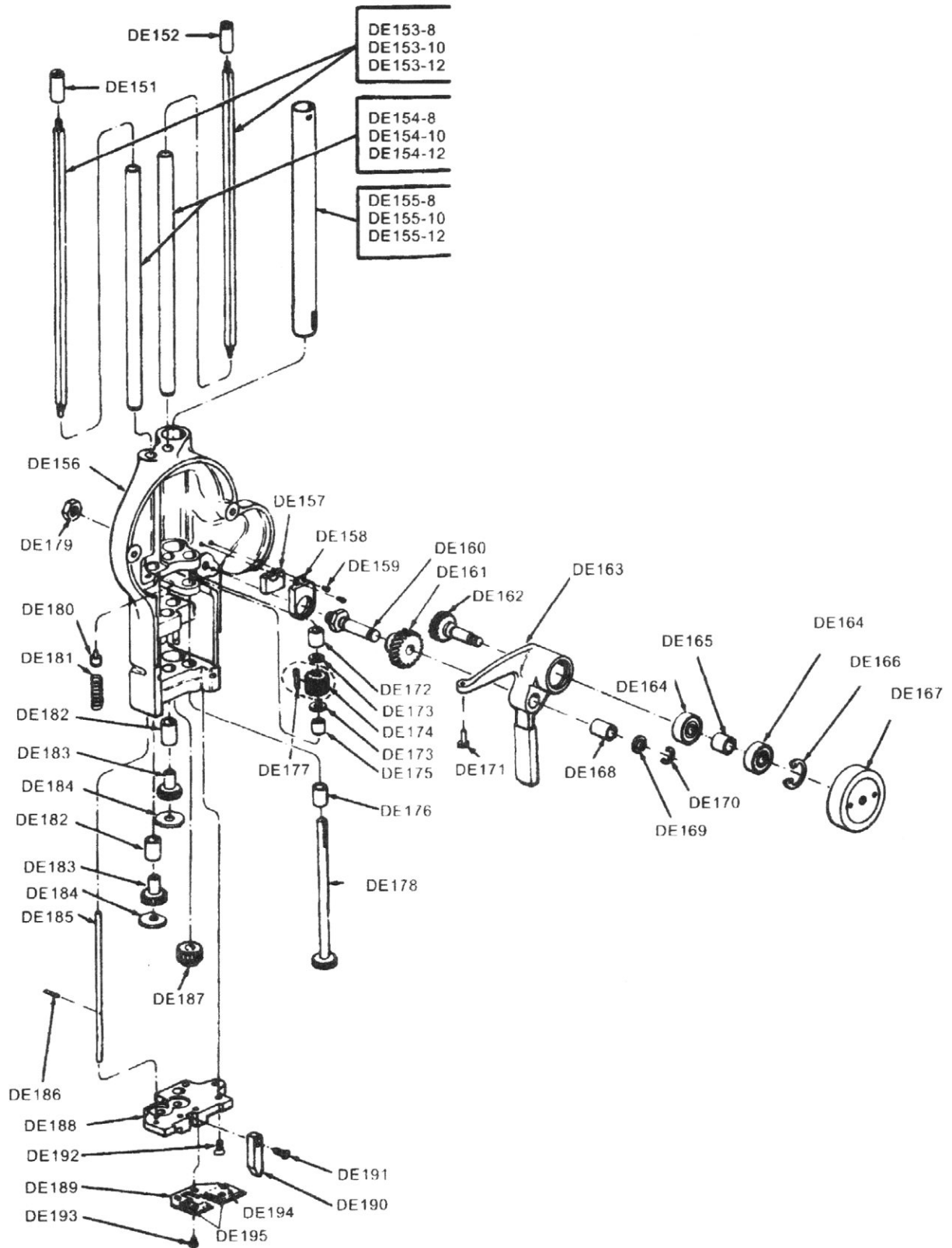
背面 BACK

Front Sharpener Housing Assembly



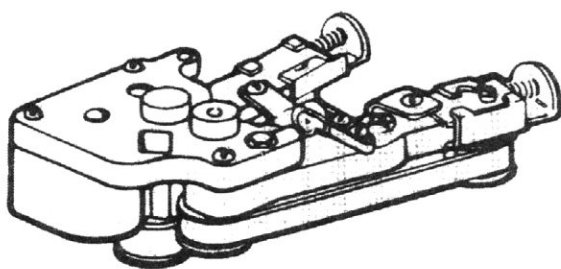
零件號 Part NO.	名稱	Description	數量 No. Req'd
DE151	隨動螺母	R.H.Follower Nut	1
DE152	隨動左螺母	L.H.Follower Nut	1
DE153	方導桿	Square Shaft	2
DE154	方導桿管套	Tube for Square Shaft	2
DE155	絲桿管套	Tube for Screw Shaft	1
DE156	磨刀機匣	Sharpener Housing	1
DE157	從動斜齒輪油蓋毛氈	Felt Pad for Oil Retainer-Idler Gear	1
DE158	從動斜齒輪油蓋	Oil Retainer-Idler Gear	1
DE159	斜齒輪油蓋螺釘	Screw	2

零件號 Part NO.	名稱	Description	數量 No. Req'd
DE160	斜齒輪芯軸	Shaft for Grank	1
DE161	斜齒輪	Idler Gear	1
DE162	斜齒輪軸	Gear and Shaft	1
DE163	斜齒輪傳動機匣	Bell Grank	1
DE164	單列向心球軸承	Ball Bearing for Grank	2
DE165	斜齒輪軸襯圈	Spacer for Bell Bearings	1
DE166	孔用彈性擋圈	Retaining Ring for Bell Crank	1
DE167	磨擦輪組件	Drive Pulley with Driver	1
DE168	斜齒輪芯軸襯套	Bearing for Bell Grank	1
DE169	墊片	Washer for Shaft	1
DE170	軸用彈性擋圈	Retaining Ring for Shaft	1
DE171	頂釘	Pin for Bell Grank	1
DE172	斜輪傳動桿上軸襯	Bearing for Drive Shaft	1
DE173	15牙斜齒輪墊圈	Thrust washer	2
DE174	15牙斜齒輪	Spiral Gear	1
DE175	齒輪傳動桿中軸襯	Bearing for Drive Shaft	1
DE176	齒輪傳動桿下軸襯	Bearing for Drive Shaft	1
DE177	鍵	Key	1
DE178	齒輪傳動桿	Driver shaft with Gear	1
DE179	六角扁螺母	Lock Nut for Shaft	1
DE180	推桿擋樁	Pin for Sharpener Housing	1
DE181	支撐彈簧	Spring for Bell Grank	1
DE182	20牙齒輪軸襯	Bearing for Gears	2
DE183	20牙齒輪	Spur Gear	2
DE184	底板座墊圈	Thrust Washer for Bottom Plate	2
DE185	推桿	Push Rod	1
DE186	推桿定位銷	Roll for Push Rod	1
DE187	絲桿軸套	Bearing for Screw Shaft	1
DE188	磨刀機匣底板	Bottom Plate	1
DE189	油墊座	Oil Pad and Holder	1
DE190	分隔塊	Spreader Pin	1
DE191	分隔塊螺釘	Screw	1
DE192	磨刀機匣底板螺釘	Screw	3
DE193	油墊座螺釘	Screw	2
DE194	空心銅鉚釘	River	4
DE195	油墊座左右墊氈	H.Oil Pad	1

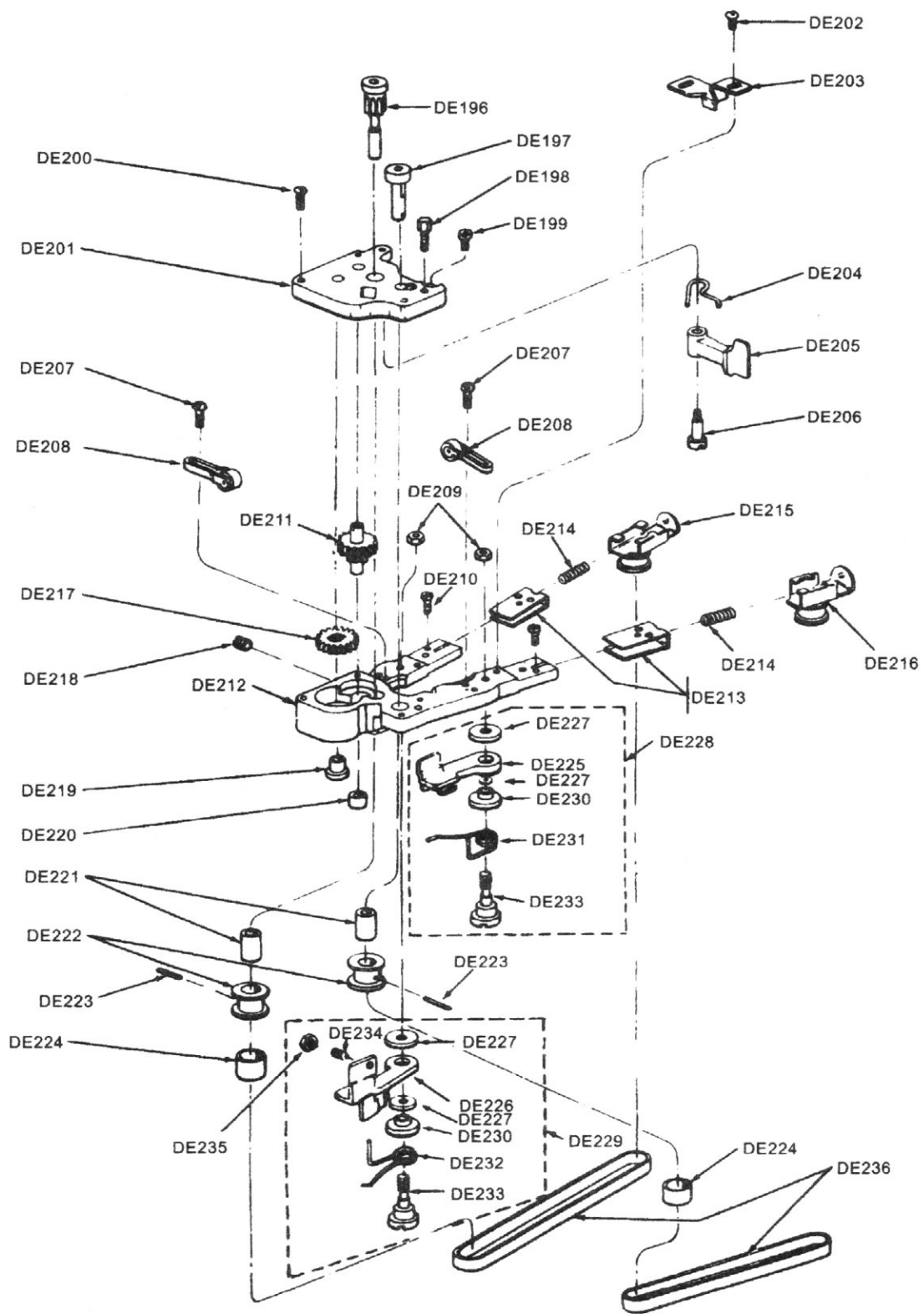


下齒輪托架組

Lower Gear Bracket Assembly



零件號 Part NO.	名稱	Description	數量 No. Req'd
DE196	牙齒輪軸	L.H.Shaft Extension 8	1
DE197	滑輪油	R.H.Shaft Extension	1
DE198	磨刀架蓋板螺釘	Adjusting Screw	1
DE199	半圓頭螺釘	Screw	1
DE200	半圓頭螺釘	Screw	3
DE201	磨刀架蓋板	Gear Cover	1
DE202	擋片螺釘	Screw	2
DE203	擋片	Guide Back of Shandard	1
DE204	夾緊臂彈簧	Spring for Arm	1
DE205	夾緊臂	Clamping Arm for Shoe	1
DE206	夾緊臂螺釘	Screw for Clamping Arm	1
DE207	緊定滾輪螺釘	Screw	4
DE208	緊定滾輪組件	Stabilizer	2
DE209	六角螺母	Nut for Sharpener Shoe Screw	2
DE210	圓柱頭螺釘	Screw.#4-36×3/16 Fillister Head	2
DE211	雙聯齒輪	Intermediate Gear	1
DE212	磨刀架	Lower Gear Bracket with Cover	1
DE213	耐磨板	Wear Plate	2
DE214	滑動小輪彈簧	Spring for Pulleyslide	2
DE215	左滑動小輪組件	R.H.Slide with Pulley	1
DE216	右滑動小輪組件	Slide with Pulley	1
DE217	24牙齒輪	Gear on Screw Shaft	1
DE218	平端緊定螺釘	Grease Plug	1
DE219	雙向絲桿襯套	Bearing for Screw Shaft	1
DE220	雙聯齒輪襯套	Bearing for Intermediate Gear	1
DE221	傳動小輪襯套	Bearing for shaft Extension	2
DE222	傳動小輪	Front Pulley tor Belt	1
DE223	彈性圓柱銷	Roll Pin	2
DE224	傳動小輪橡膠套	Neoprene Band for Pulley	2
DE225	右磨刀墊	R.H.Pre-set Sharpener Shoe(Only)	1
DE226	左磨刀墊	L.H.Pre-set Sharpener Shoe(Only)	1
DD227	磨刀墊螺釘墊片	Washer	4
DE228	右磨刀墊組件	R.H.Pre-set Sharpener Shoe	1
DE229	左磨刀墊組件	L.H.Pre-set Sharpener Shoe	1
DE230	磨刀墊螺釘襯套	Bushing for sharpener Shoe	2
DE231	右彈簧	R.H.Sharpener Shoe Spring	1
DE232	左彈簧	L.H.Sharpener Shoe Spring	1
DE233	磨刀墊螺釘	Screw for Sharpener shoe	2
DE234	內六角錐端緊定螺釘	Shon Screw	1
DE235	小六角較扁母	Jam Nut	1
DE236	砂帶	Belt	2



附件 Accessories

零件號 Part N0.	名稱	Description	數量
DE236	砂帶	Belt	10
DE237	內六角板手	Wrench	2
DE238	螺絲刀	Screw Driver	2
DE239	四角套筒	Square Sleeve	1
DE240	電源綫插頭組件	Attachment & Wire Plug	1
DE241	清掃器	Cleaner	1
DE242	油壺	Oilcan	1
DE8	刀片	Knife	1

12"、10"、8"、6" 不同尺寸零件表 Different Size Parts List

零件號 Part N0.	名稱	Description	尺寸规格Size			
			12"	10"	8"	6"
DE 150	壓脚桿	Knife Guard Rod	414	364	314	314
DE 154	方導桿管套	Tube for Square Shaft	295	245	195	195
DE 155	絲桿管套	Tube for Screw Shaft	294	244	194	194
DE 153	方導桿	Square Shaft	347	297	247	247
DE 113	雙向絲桿	Screw Shaft	419	369	319	269
DE 92	刀殼組件	Knife Slide	319	269	219	169
DE 8	刀片	Knife	344	294	244	194
DE91	立柱	Standard	324	274	224	174

操作前警示:

本機已經調試到最好的公差和適當的測試，盡力消除可能發生運轉不順的情況，使在第一個磨合期更順暢。新機打開使用時，請先將開關打開、關閉6次，每次約2秒，使機油能預先潤滑。請使用指定規格機油。

PRECAUTIONARY OPERATION

This machine has been adjusted to very fine tolerance and fitted with antiseize compound in an effort to eliminate any possibility of seizing during the first month running-in period. We recommend that the machine be switched on/off 6 times at 2 second intervals to allow the oil to circulate before commencing use. Use only recommended oil or at least 30 grade.

品質保證 GUARANTEE

我們對本機的质量保證期為六個月。範圍包括因制造或品質產生的質量問題時，提供免費的零件更換、維修以及退返的運送費用。但是若因人為的使用不當或濫用、碰撞等其它非制造原因以及使用非適利原廠刀片、砂帶、零件於本機時所發生的故障，不在本機質量保修範圍內。

We guarantee our machines for six months from date of invoice against defective parts and workmanship and will repair or replace any machine going wrong from these causes when returned to us carrying charges prepaid. This guarantee does not contemplate making good damage caused by misuse or neglect; and is void if other than genuine Su Lee knives, emery wheels and parts are used in the machine.

Su Lee Machine Industrial Company Limited

Address: 190 Hwang Gang Road, Peitou, Taipei, Taiwan
Fax: 886-2-28940855 Tel: (02) 2892 7700 28914693

Http://www.sulee.com.tw.
E-mail: sulee1@ms11.hinet.net